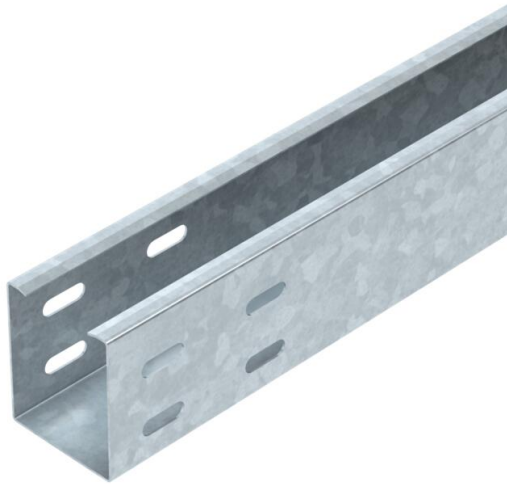


# Technical data sheet

## Cable tray MKSU 60 FT

Item number: 6064299



Medium-duty, unperforated cable tray for the horizontal routing of cables. According to EN 61537. Can be used indoors and outdoors. Screw connection. Suitable for direct and raised floor mounting, as well as wall and ceiling mounting on a support system. With connector perforation at the end of the cable tray. Magnetic shield insulation without cover 20 dB, with cover 50 dB. Matching cover with turn buckle: Type AZDMD 50



St	Steel
FT	Hot-dip galvanised

### Master data

Item number	6064299
Description 1	Cable tray MKSU
Description 2	unperforated, connector holes
Manufacturer	OBO
Dimension	60x50x3000
Material	Steel
Surface	Hot-dip galvanised
Surface standard	DIN EN ISO 1461
Smallest sales unit	6
Unit of quantity	Metre
Weight	159 kg
Weight unit	kg/100 m

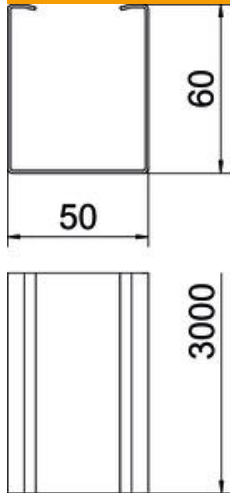
# Technical data sheet

## Cable tray MKSU 60 FT

Item number: 6064299



### Dimensions



Dimension	60x50
Length	3,000 mm
Width	50 mm
Height	60 mm
Plate thickness	1 mm
Dimension H	60 mm

### Technical data

Connector version	Without connectors
Mounting system fastening type	Floor Ceiling Wall
Maintain electrical functions	no
Mounting perforation in base	no
Usable cross-section	30 cm <sup>2</sup>
Usable cross-section	3000 mm <sup>2</sup>
Rustproof steel, pickled	no
Side perforation	no
Wide-span version	no
Load test type according to IEC 61537	Type II
Type of connector, cable support system	Screwed