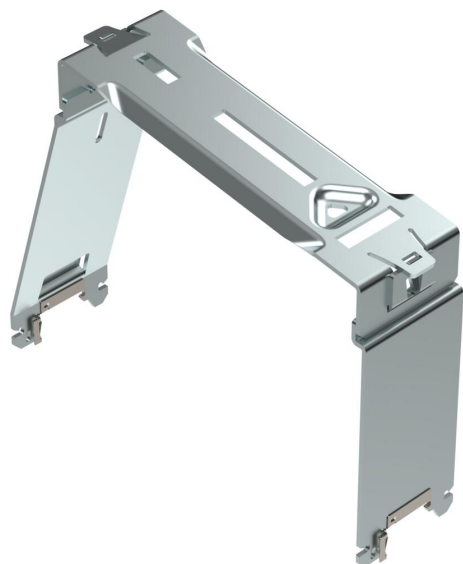


Technical data sheet

10° Long support for PV module mounting, south orientation, flat roof

Item number: 5901665



Long support for PV module mounting on flat roofs in south orientation. Mounting in combination with support profile TPF 35 and universal clamp KLU or end and connection clamps with springs (KLE F/KLZ F). Angle of inclination 10°. Lockable fastening on support profile.

St Steel

DD Strip galvanised zinc/aluminium, Double Dip

Master data

Item number	5901665
Type	STLS AD DD
Description 1	Long support south
Description 2	for flat roof system
Manufacturer	OBO
Dimension	306,8x242,2x80
Colour	zinc
Material	Steel
Surface	Strip galvanised zinc/aluminium, Double Dip
Surface standard	DIN EN 10346
Smallest sales unit	8
Unit of quantity	Piece
Weight	125.9 kg
Weight unit	kg/100 pc.

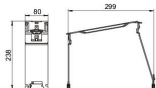
Technical data sheet

10° Long support for PV module mounting, south orientation, flat roof

Item number: 5901665



Dimensions



Length	281.4 mm
Width	80 mm
Height	237.7 mm

Technical data

With fastening material	no
Angle of inclination, max.	10 °
Angle of inclination, min.	10 °
Adjustable	no
Photovoltaic connection and fastening element version	Other
Torsion spring stiffness (k.rot.y)	0
Torsion spring stiffness (k.rot.z)	0
With module earthing	no