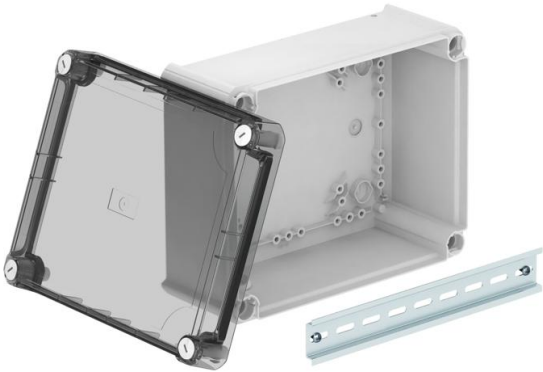


# Technical data sheet

## Junction box T250, closed, transparent elevated cover

Item number: 2007776



Closed junction box for the connection of cables in indoor and protected outdoor areas. Rectangular design without entries. Suitable for wall and ceiling mounting, on mounting panels and threads in the floor. With the option of fastening inside and to mount via the corner domes. High, transparent cover with quick lock, sealable. Made from halogen-free, UV-resistant materials.

With hat profile rail.

Junction box according to DIN EN 60670. Flame-resistant to DIN EN 60695/2/11, test temperature 650°C. Impact resistance IK05 according to DIN EN 50102. Clear internal dimensions: 225x173x102 mm



PP/PC

Polypropylene / polycarbonate

Master data		
Item number	2007776	
Description 1	Junction box, closed	
Description 2	with high transparent cover	
Manufacturer	OBO	
Dimension	240x190x115	
Colour	Light grey; RAL 7035	
Material	Polypropylene / polycarbonate	
Smallest sales unit	1	
Unit of quantity	Piece	
Weight	50.57 kg	
Weight unit	kg/100 pc.	
CO Footprint (GWP) Cradle-to-Gate	3,4586 kg COe / 1 Piece	

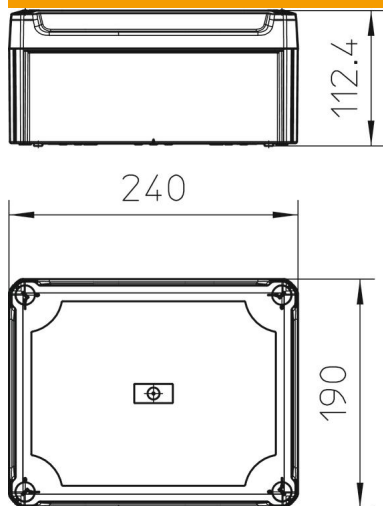
# Technical data sheet

## Junction box T250, closed, transparent elevated cover

Item number: 2007776



### Dimensions



Length	240 mm
Width	190 mm
Height	112 mm

### Technical data

Expandable	yes
Type of insertion...	None
Type of entry	Cable
Type of housing penetration	Without
Measured insulation voltage Vi	500 V
Equipment	Without
Cover	Transparent
Cover fastening	Screwed
Entry from rear	yes
Entries	None
Explosion-tested version	no
Flame-resistant	acc. to VDE 0471/DIN 695 Part 2-1, test temperature 650°C
Shape	Rectangular
Maintain electrical functions	Without
For Ex zone	Without
For Ex zone gas	Without
For Ex zone dust	Without
Fibre-glass reinforced	yes
Halogen-free	yes
Clear internal dimensions	225x173x102 mm
With screening	no
with lid	yes
Mounting type	Wall/ceiling mounting
Nominal voltage	500 V
Sealable	yes
Protection rating	IP66
Protection rating IK code	IK05.
Permitted temperature range, max.	60 °C
Permitted temperature range, min.	-5 °C

# Technical data sheet

Junction box T250, closed, transparent elevated cover

Item number: 2007776



## Technical data

Weatherproof	no
--------------	----