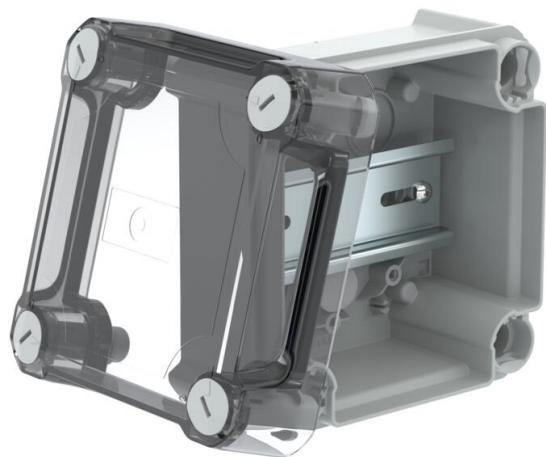


# Technical data sheet

## Junction box T60, closed, transparent elevated cover

Item number: 2007770



Closed junction box for the connection of cables and lines indoors and in protected outdoor areas. Square design without entries. Suitable for wall and ceiling mounting and on mounting panels. With the option to fasten inside and to mount via the corner domes. High, transparent cover with quick lock, sealable. Made from halogen-free and UV-resistant materials.

With hat profile rail.

Junction box according to DIN EN 60670. Flame-resistant to DIN EN 60695/2/11, test temperature 650 °C. Impact resistance IK07 according to DIN EN 50102. Clear internal dimensions: 100x100x63 mm



PP/  
PC

Polypropylene / polycarbonate

### Master data

|                                    |                               |
|------------------------------------|-------------------------------|
| Item number                        | 2007770                       |
| Type                               | T 60 OE HD TR                 |
| Description 1                      | Junction box, closed          |
| Description 2                      | with high transparent cover   |
| Manufacturer                       | OBO                           |
| Dimension                          | 114x114x76                    |
| Colour                             | Light grey; RAL 7035          |
| Material                           | Polypropylene / polycarbonate |
| Smallest sales unit                | 1                             |
| Unit of quantity                   | Piece                         |
| Weight                             | 16.6 kg                       |
| Weight unit                        | kg/100 pc.                    |
| CO2 Footprint (GWP) Cradle-to-Gate | 0,7278 kg COe / 1 Piece       |

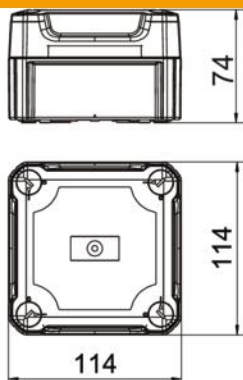
# Technical data sheet

## Junction box T60, closed, transparent elevated cover

Item number: 2007770



### Dimensions



|        |        |
|--------|--------|
| Length | 114 mm |
| Width  | 114 mm |
| Height | 74 mm  |

### Technical data

|                                   |   |
|-----------------------------------|---|
| Expandable                        | yes   |
| Type of insertion                 | None  |
| Type of entry                     | Cable   |
| Type of housing penetration       | Without   |
| Measured insulation voltage $V_i$ | 500 V   |
| Equipment                         | Without   |
| Cover                             | Not transparent   |
| Cover fastening                   | Screwed   |
| Entry from rear                   | yes   |
| Entries                           | None  |
| Explosion-tested version          | no  |
| Flame-resistant                   | acc. to VDE 0471/DIN 695 Part 2-1, test temperature 650°C |
| Shape                             | Square  |
| Maintain electrical functions     | Without   |
| For Ex zone                       | Without   |
| For Ex zone gas                   | Without   |
| For Ex zone dust                  | Without   |
| Fibre-glass reinforced            | no  |
| Halogen-free                      | yes   |
| Clear internal dimensions         | 100x100x63 mm   |
| With screening                    | no  |
| with lid                          | yes   |
| Mounting type                     | Wall/ceiling mounting                                     |
| Nominal voltage                   | 500 V   |
| Sealable                          | yes   |
| Protection rating                 | IP66  |
| Protection rating IK code         | IK07.   |
| Permitted temperature range, max. | 60 °C   |
| Permitted temperature range, min. | -5 °C   |
| Transparent lid                   | no  |
| Weatherproof                      | no  |