



# Customer projects

OBO products are used around the world

**Building Connections**

**OBO**  
BETTERMANN

# Introduction

## We design the electrical infrastructure of the future

In accordance with our motto of Building Connections, we strengthen relationships and establish connections: between our customers and the OBO brand, between our products and the wide variety of installation systems, to offer safe electrical infrastructure that bridges the present and the future.

This is exactly what our around 30,000 products for the electronic infrastructure of buildings do around the clock – and have done since 1911. Every day, 4,200 employees in eight production locations and in 40 subsidiaries around the world ensure that the products from the areas of

- Industrial installations
- Building installations
- Safety and protection installations

contribute to the safe routing of power and data.

At OBO, the essential element is mutual trust and the committed interaction between our employees, customers and suppliers.

In the following section, we would like to show you which amazing construction projects OBO Bettermann has had the privilege of supporting in the past – Building Connections in the truest sense.

## Table of contents

### Public buildings

from page 3

- Archiv der Avantgarden, Dresden, Germany
- Futurium, Berlin, Germany
- Museo della Pietá, Milan, Italy
- Neues Museum, Berlin, Germany
- Leipzig Opera House, Leipzig, Germany
- Bus depot, Braunschweig, Germany
- Park & Ride building, Antwerp, Belgium
- Antwerp Town Hall, Belgium
- Suspension monorail, Wuppertal, Germany
- Swiss Life Arena, Zurich, Switzerland
- The Circle, Zurich, Switzerland
- Art installation, Budapest, Hungary
- Cable trays as modern artworks, Frankfurt a. M. / NYC

### Commercial & residential buildings

from page 36

- ATLAS GmbH, Dortmund, Germany
- Axel Springer, Berlin, Germany
- BVB Fanwelt, Dortmund, Germany
- Eclipse, Düsseldorf, Germany
- Enjoy Fitness Studio, Oviedo, Spain
- Wiska headquarters, Kaltenkirchen, Germany
- Hirschmann Automotive, Sânpaul, Romania
- JB-Motors GmbH, Stuhr, Germany
- Jorssen Noord BMW car dealership, Antwerp, Belgium
- Logistics Centre OBO Bettermann, Menden, Germany
- Providur's Palace, Zadar, Croatia
- Telekom Store, Hamburg, Germany
- UNI ELEKTRO, Mittenwalde, Germany
- Villa in der Natur, (Villa in nature) Stuttgart, Germany
- Vitesco Technologies, Iași, Romania

### Tunnels & bridges

from page 78

- Maastunnel, Rotterdam, Netherlands
- Annie Cordy Tunnel, Brussels, Belgium
- Hong Kong-Zhuhai-Macau Bridge, Hong Kong, China
- Montemor Tunnel, Lisbon, Portugal
- Livan infrastructure project, Antwerp, Belgium

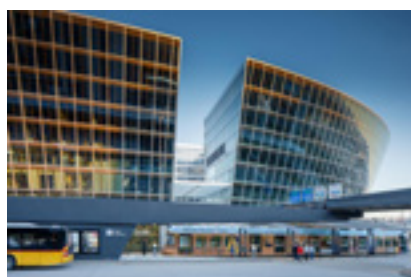
# Customer projects | Public buildings

No matter whether dealing with historical buildings or special solutions for both small and large projects, OBO can find a way.

Decades of experience have made it possible for our customers to rely 100 per cent on our team and our products.

Over the following pages, we would like to present a selection of special projects, in this case from the public sector.

- Archiv der Avantgarden, Dresden, Germany
- Futurium, Berlin, Germany
- Museo della Pietá, Milan, Italy
- Neues Museum, Berlin, Germany
- Leipzig Opera House, Leipzig, Germany
- Bus depot, Braunschweig, Germany
- Park & Ride building, Antwerp, Belgium
- Antwerp Town Hall, Belgium
- Suspension monorail, Wuppertal, Germany
- Swiss Life Arena, Zurich, Switzerland
- The Circle, Zurich, Switzerland
- Art installation, Budapest, Hungary
- Cable trays as modern artworks, Frankfurt a. M. / NYC



# Archiv der Avantgarden, Germany

State Art Collections in Dresden



**Dresden  
Germany**

|                      |  |
|----------------------|--|
| Client:              | State Art Collections<br>Dresden                                       |
| Architect:           | Nieto Sobejano Architectos,<br>Berlin                                  |
| Electrical planner:  | Brendel Ingenieure GmbH,<br>Dresden                                    |
| Installer:           | SF-Ausbau GmbH, Freiberg   |
| Floor space:         | 2,264 m <sup>2</sup>   |
| Construction period: | March 2019 to April 2024   |
| OBO products:        | Cable support systems,<br>underfloor systems, cable<br>routing systems |

The Blockhaus building in Dresden – a striking building located directly on the River Elbe and in close proximity to the historical centre – was initially built in 1732.

During the course of its history the building has undergone many changes, such as being reconstructed and used once again after sustaining substantial damage in the Second World War. Today, it houses an innovative project covering a floor space of around 2,000 square metres, with the goal of making the archive of the Marzona Collection accessible to both experts and the general public.

A central design element of the project is a floating cube made out of solid concrete which houses the archive. This modern feature leaves the surrounding areas free and allows for flexible use of the building for public events, exhibitions, workshops and conferences. The floating concrete cube becomes the symbolic centrepiece that retains the past as an indispensable part of the present.

The concept of the project addresses the link between history and progress.

Through this innovative approach, the Blockhaus building becomes a place for dialogue – where artistic and architectural traditions are translated into the present and are interpreted in a new way.

OBO Bettermann was able to contribute to this extraordinary project with products from its cable support systems, under-floor systems and cable routing systems. In fact, the special heights of the lined bodies in the exposed concrete were made possible by the selection of OBO cassettes.





Futurium  
Berlin





# Futurium, Germany

Underfloor systems from OBO in the House of the Future, Berlin



**Berlin**  
**Germany**

|                       |   |
|-----------------------|---|
| Architect:            | Christoph Richter<br>and Jan Musikowski |
| Size of the building: | 14,000 m <sup>2</sup>                   |
| OBO products:         | Underfloor systems                      |



### **The House of the Future uses a flexible power supply**

The Futurium, the “House of the Future”, is located between the Charité Hospital and the Office of the Federal Chancellor, in the centre of the government district. The glass façade reflects the sky and the building feels like a cloud, embedded in the bustle of the city. However, it is not only the exterior of the Futurium that impresses, but also the interior: Here, OBO underfloor systems ensure a flexible power supply.

The three-storey Futurium has been open to young and old from the spring of 2019, presenting the world of tomorrow. Downstairs, the so-called “Cave” contains the laboratory. This is where the future can be seen today. Above it, at the heart of the building, is the 600 square metre event level. Here, events take place in a fitting ambience.

The next level up features the “Cloud”, where various exhibitions are held on an area of 3,200 square metres. During the overall planning, flexibility was of key importance. It is particularly in the central area, the event level, that different scenarios were conceived. It soon became clear that almost every event that takes place here requires mobile technology. The same is true for the exhibition area on the top floor. Changing exhibitions require flexible power supplies, in this case via the floor.

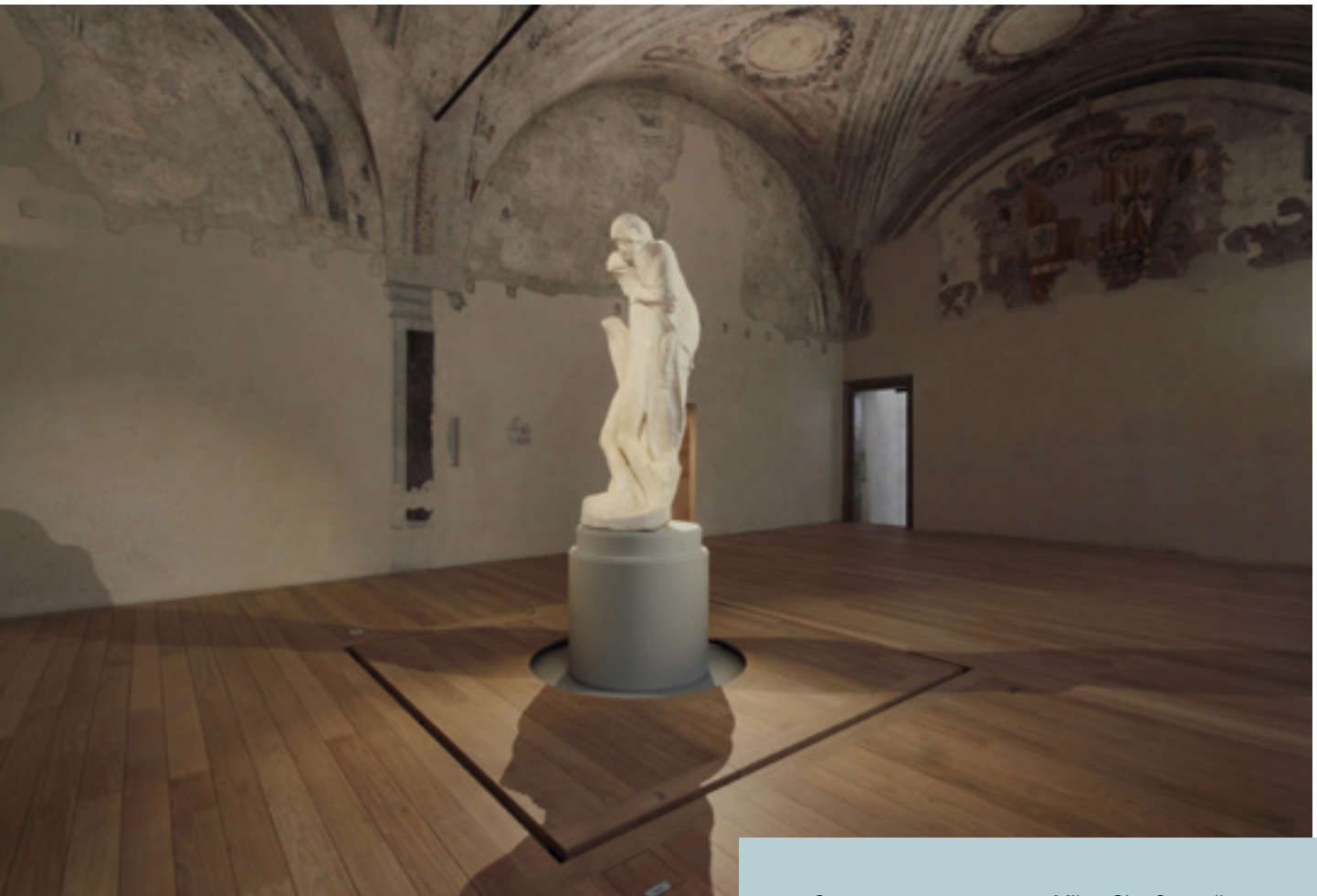
### **This is why the customer chose OBO products**

The OBO products stood out through their combination of functionality and aesthetic solutions for high-quality room architecture. For the bottom and top areas, a mastic asphalt terrazzo floor was laid, and in the centre, a lower layer of cement-bound screed. In all areas, special solutions from OBO were used.

The architects Christoph Richter and Jan Musikowski were impressed by the perfect harmony between the OBO solutions and the different terrazzo floors.

# Museo della Pietà, Milan

OKB trunking provides a discreet and flexible power supply



|               |   |
|---------------|---|
| Contractor:   | Milan City Council  |
| Architect:    | aMDL Architetto Michele De Lucchi Srl                       |
| Installer:    | E.T.I. di Muggiati Ivan e Sacchi Fabio S.R.L., Pavia, Italy |
| OBO products: | Floor installation systems and underfloor applications      |



At Museo della Pietà in Milan, OKB trunking from OBO provides a discreet and flexible power supply around Michelangelo's final masterpiece.

The new museum is dedicated exclusively to Michelangelo's last work, Rondanini Pietà. The exhibition rooms were designed by renowned designer and architect Michele De Lucchi, perfectly showcasing the artwork.

The open, screed-flush OKB trunking system with brush bar is suitable for cable routing and the protected installation of equipment in floors. In the new Museo della Pietà, the trunking is laid along the walls. A brush bar closes the cable outlet opening, which runs along the entire length of the

trunking system. To allow access to the power supply further inside the room, closer to the sculpture, compact UDHOME floor sockets were used in the parquet flooring. Their stainless steel parts visible in the floor covering blend discreetly into the ambience of the room. The cable feed of the sockets was easily implemented using flexible pipes.

This made it possible to install the underfloor sockets at any location in the floor and connect them to the trunking systems along the walls. In this combination, the OBO products were able to meet all requirements for the planning and design of the historic room. The museum now offers its visitors an unobstructed view of Rondanini Pietà.



# Neues Museum Berlin





1350

# Neues Museum, Germany

Function meets aesthetics – even under difficult conditions



**Berlin**  
**Germany**

|                       |   |
|-----------------------|---|
| Builder:              | State of Berlin   |
| Architect:            | David Chipperfield Architects Berlin, architect Julian Harrap |
| Installer:            | Project architect Matthias Fiegl                              |
| Size of the building: | 14,000 m <sup>2</sup>   |
| OBO products:         | Underfloor systems  |



### World heritage requires special solutions

As part of Berlin's Museumsinsel (Museum Island), the Neues Museum has been a World Heritage Site since 1999 and is one of the most important cultural institutions in Europe, with its collections of Egyptian, prehistoric and classical artefacts. Completed in 1855, the building is considered the masterpiece of architect Friedrich A. Stülers, and was painstakingly restored and transformed into one complete building between 2003 and 2009, after being destroyed in WWII.

The extensive restorations were based on designs from David Chipperfield, in which the historic building structure was to be preserved and expanded. These plans were implemented in collaboration with David Chipperfield Architects Berlin and the architect, Julian Harrap, and posed a particular challenge with regard to the electrical installation. The plans required equipment that was equally discreet, robust and reliable, and which could be integrated easily into the elegant and versatile spaces.

The walls and ceiling had to remain untouched due to the strict artistic and restorative restrictions. This was a challenge that OBO Bettermann was happy to rise to and able to meet with a unique solution.

### OBO supplies floor tanks with special solutions

The OBO floor tanks installed here are small, robust and integrate themselves perfectly into the aesthetic interior of the Neues Museum. All visible metal parts were made of burnished bronze and embedded into terrazzo floors, polished concrete, concrete blocks, mosaic floors and wooden floorboards. Some of the tanks were equipped with special frames that were not connected at the corners to compensate for ground stress. Other tanks were installed in such a way that the frame was no longer visible.

The final product was bronzed floor boxes that enable flexible access, with a Schuko socket and two data connections, while not interfering with the architectural design of the interior, but even aesthetically and discreetly complementing it.

# Leipzig Opera House, Germany

OBO Bettermann in the historic building of the Leipzig Opera



|               |  |
|---------------|--|
| Client:       | City of Leipzig  |
| Architect:    | Kunz Nierade<br>(1901–1976)                                    |
| OBO products: | PYROLINE® Rapid PLM<br>metal fire protection ducts<br>Fittings |

The Leipzig Opera House, which opened on 8 October 1960 and is located in the centre of Leipzig on Augustusplatz, was built in the neoclassical style and designed by Kunz Nierade and Kurt Hemmerling.

The building complex comprises seven storeys, plus the stage fly tower and the rigging system floor and the basements with the stage machinery.

Logically, such a venerable building requires renovation work, which is gradually being carried out. In this context, the stage management system has also been modernised.

Specifically, it was necessary to install 620 metres of PLM D 0810 FS fire protection duct, along with various fittings, in the escape and rescue routes of the opera house. The stage management system controls the lighting and sound, the entire coordination of the stage and machine technology as

well as all the artists. It is the centrepiece of performance technology.

As OBO Bettermann provides exactly the right products for this type of project and can support the renovation process and the relevant tradespeople with expert advice on-site, the choice of manufacturer for the opera house was clear.

Thanks to the uncomplicated installation and fastening of the fire protection ducts as well as their certified quality, OBO Bettermann was able to meet the challenges of the project successfully despite the shortened construction time. Another advantage during the construction phase was the fast delivery of the products thanks to the regional OBO Bettermann warehouse in Delitzsch.



# Braunschweig depot, Germany

Renovation of the Lindenberg bus depot



|                      |   |
|----------------------|---|
| Architects:          | DECKER ARCHITEKTEN & INGENIEURE, Braunschweig   |
| Electrical planners: | Hanusch Engineering Office, Oschersleben  |
| Installers:          | N & L ELEKTROTECHNIK Nowak & Lichter GmbH, Braunschweig   |
| Timeframe:           | Early 2023 to mid-2025  |
| OBO products:        | Earthing system and lightning protection throughout the building, with TBS as the product unit involved |

### Lightning protection from OBO Bettermann for increased safety

In south Braunschweig, Braunschweiger Verkehrs GmbH operates the Lindenberg bus depot.

This depot is home to the workshop, bus parking hall, depot office buildings, boiler house and the outbuildings.

Built in the 1960s and 1970s, these facilities are now due for renovation in multiple stages of construction.

The bus depot grounds cover an area of 50,633 square metres, where approximately 45,000 square metres are used for operations. The building project includes the construction of a new workshop hall measuring approximately 1,800 square metres, with an administration and social wing. This workshop hall, with a bus washing bay, a petrol station, maintenance pits and a roof work structure is being built to the south of the already renovated main workshop.

Construction began in early 2023 and was completed in mid-2025. OBO was at their side with advice and support throughout the entire process. Thanks to the solid, long-standing experience of OBO staff, the building was planned and equipped in accordance with lightning protection class 1.

After that, there are plans to migrate the bus fleet from diesel to electric buses over the next few years. Three bus port systems will be built to accommodate and charge these new electric buses.



# Park & Ride building Linkeroever, Belgium

OBO is a part of one of the largest infrastructure projects in Europe



**Antwerp  
Belgium**

OBO products:

Connection and fastening systems, cable support systems



### **Cable support systems provide mobility in Antwerp**

OBO Belgium supplied products from the connection and fastening systems and cable support systems sectors for the Park & Ride building in the Antwerp suburb of Linkeroever. This means that OBO is making a contribution to mobility improvements in Antwerp. A total of 10 kilometres of cable trays were routed here, including those for lighting and the power supply of the car park signage.

More than 10,000 spacer clips of type ASL 733 provide reliable cable routing for the emergency lighting. All the products used here are tested and approved for the maintenance of electrical function.

This meant that OBO's fire protection competence was key in winning this project.

# Antwerp Town Hall, Belgium

OBO underfloor systems provide a design-orientated solution



**Antwerp  
Belgium**

|                       |  |
|-----------------------|--|
| Client:               | AG Vespa   |
| Architects:           | Design team,<br>"Huis van de Stad"   |
| Electrical planners:  | EVIP nv Installer<br>THV Monument<br>Vandekerckhove nv,<br>Monument Goedleven nv,<br>Altritempi nv |
| Size of the building: | 1,799 m <sup>2</sup>   |
| OBO products:         | Underfloor systems   |



### OBO products in UNESCO World Heritage Site

Antwerp Town Hall was completely restored between 2018 and 2022. Part of the work involved the use of underfloor systems from OBO. The town hall in Antwerp is listed as a UNESCO World Heritage Site.

It was built in 1561 and it was now time to restore elements, such as the numerous paintings and the gilded wall panelling. The exterior walls were also restored, giving the masonry a new lease of life. Of course, a town hall is not just a cultural building, but also a functional one. For this reason, the entire electrical engineering in the building was renovated, in order to guarantee an improved supply of power and data. The OBO underfloor solutions came into play here.

The UDHOME2 floor socket with hinged lid and the GES9M-2, delivered in bronze at the behest of the customer, were installed in the parquet floor in the second floor of the building. The UDHOME2 with tube body was installed on the

ground floor. Here too, the architect decided on a bronze version, as this fit better into the atmosphere of the building. Here, the sockets are mounted at an angle of 54°, meaning that the cover can also be closed when the socket is in use.

### Why OBO Bettermann was chosen

In this project, the electrical installation engineer decided on OBO due to its wide range of underfloor solutions. These match the low floor height in the town hall perfectly.

The historical character of the building was to remain intact. This and the very small installation depth were challenges to be tackled in this project. The underfloor systems from OBO represent an elegant solution to supply existing offices with data and power.

# Suspension monorail, Germany

Cable trays from OBO Bettermann fly above Wuppertal



 **Wuppertal  
Germany**

|               |   |
|---------------|---|
| Client:       | City of Wuppertal                                       |
| Installer:    | WISAG Elektrotechnik                                    |
| OBO products: | Connection and fastening systems, cable support systems |



### **Tricky construction? Not a problem for OBO!**

The city of Wuppertal is famous for its steely dragon, the suspension monorail.

Every day, 85,000 passengers travel – traffic-free – from east to west over the River Wupper. It is a fixture and a true symbol of the city, and has already carried more than 1.5 billion people along the valley.

The stops are high up, above the rooftops of the city. It is clear that the railway, which travels at around 60 km/h, is subject to continuous inspection.

If tricky constructions are involved, then OBO Bettermann and its products are the right partner. In Wuppertal, 320 metres of wide span cable tray were placed on a historic building dating from 1901 as preparation for reconstruction work.

The resulting mobile power supply headquarters guarantee the safe guidance of power and data.

A particular challenge lay in the complex construction from the previous century. The client chose OBO due to the high quality of the materials and the large product range.

### **Reliability and proximity pay dividends**

Technical support was another reason for their decision. The high density of regional warehouses allowed OBO to guarantee a reliable delivery.

# Swiss Life Arena, Switzerland

BETTERMANN AG takes to the ice



**Zurich**  
**Switzerland**

|               |   |
|---------------|---|
| Client:       | ZSC Lions Arena<br>Immobilien AG                  |
| Architects:   | Caruso St John Architects                         |
| OBO products: | Cable support systems,<br>fire protection systems |



### **BETTERMANN AG takes to the ice**

An ice skating rink with state-of-the-art media and event technology – this is the place of pilgrimage in Zurich for fans of ice hockey, which was completed in 2022.

In the Swiss Life Arena, fans are up close and personal when their team, the ZSC Lions, give their all on the ice. The arena then becomes a cauldron of noise. The Swiss Life Arena is not only the new home of the ZSC Lions, but also of other sporting events and corporate events, as well as the events of sponsors.

The Swiss Life Arena, planned by Caruso St John Architects,

is near Zurich's Altstetten railway station. It offers space for a maximum of 12,000 spectators, including standing spaces.

Before the opening could take place in the autumn of 2022, it required a large amount of products from OBO Bettermann. These included countless cable support systems from the RKS-Magic® series and from the wide span series, as well as a diverse range of fastening systems for solid and steel construction connections.

Systems from the fire protection segment also helped with the safe routing of data.

# The Circle, Switzerland

OBO ensures reliable cable routing



 **Zurich**  
**Switzerland**

|               |   |
|---------------|---|
| Client:       | Joint project between Flughafen Zürich AG (Zurich Airport) and the life assurance group Swiss Life AG |
| Architects:   | Riken Yamamoto  |
| OBO products: | Cable support systems, fire protection systems, connection and fastening systems                      |



### **Well-being at the airport**

If there's time to spare between two flights or during transit, it could barely be any more practical. The Circle, located directly at Zurich Airport, fulfils the heart's every desire. Shops, restaurants, multiple hotels and a park transform the area around the airport into a new district of the city of Zurich, just ten minutes from the city centre.

The Circle and the adjacent park are directly linked to the airport terminals and also offer a quality external ambience and a quality address that is one-of-a-kind at any airport in the world. On the one side are the above- and below-ground access points to the airport, whilst, on the other, there is the so-called Butzenbüel, the partially wooded hill behind the airport, which is encompassed by The Circle.

The Japanese architect, Riken Yamamoto, took his inspiration from Zurich's old city centre. The small, winding lanes that run to the park area through deep chasms in the façade are an example of this.

As a systems provider for various areas of electrical installations, OBO Bettermann had to be a part of this project. A core area of cable routing was in the creation of safety power circuits, where OBO can offer optimum flexibility for the individual situations, thanks to its wide range of systems for the maintenance of electrical function.

Besides technical aspects, OBO could offer reliable, professional services in the fields of consultation, project support and availability, thus providing optimum support.

### **Wide-ranging OBO products supply airport district**

The building has received the highest LEED Platinum standard, meaning that it not only represents sustainable construction and water savings, but also comfort and spatial quality.

OBO products were installed in the entire building, which has an area of 37,000 square metres and a usable area of 210,000 square metres.

These include systems for the field of fire protection, including various systems for the maintenance of electrical function, with RKSM, GRIP-M, FireBoxes, vertical and cable ladders, a wide selection of cable support systems and connection systems, including those from the T series, with fastening systems and mounting rails.



# Art installations Worldwide





# Art installation, Hungary

OBO RKS Magic cable trays put art into the spotlight



**Budapest  
Hungary**

|               |  |
|---------------|--|
| Contractor:   | acb Galéria                            |
| Architect:    | Pyxis Nautica,<br>Tamás Tótszabó       |
| Installer:    | Dénes Tóth,<br>OBO Bettermann          |
| OBO products: | Magic® cable trays,<br>plug connection |

## **OBO RKS Magic cable trays transformed into art at the Budapest Contemporary art fair**

Cable trays from OBO are usually installed under the ceiling or on walls, acting as the silent heroes of cable routing.

As part of the Budapest Contemporary art fair, OBO Bettermann Hungary participated in the creation of its own installation, putting a spotlight on products that are otherwise unseen.

The collaboration was the result of the hard work of architectural firm Pyxis Nautica, art gallery acb Galéria and OBO Bettermann Hungary.

Commissioned by the art gallery, the architectural firm designed the installation based on RKS Magic – and OBO Bettermann provided support during the planning, execution and realisation on-site.

The result is a unique installation that places a special focus on the aesthetic of the cable trays.

Architect Tamás Tótszabó was familiar with the OBO product portfolio from previous projects and wanted to showcase the wide range of applications of the products, as he appreciates the aesthetic and design of the OBO cable trays.

Among other things, the construction was made up of 111 metres of RKSM 615 FS cable trays and 12 FangFix concrete blocks, as well as 30 metres of steel pipes to display the different works of art and to provide the stability needed.

The RKSM frame was used to present the artwork of acb Galéria.

Budapest Contemporary is one of the largest fairs for contemporary art in Hungary, offering an extensive overview of artists and their works from leading galleries in Hungary over several thousand square metres, to bring together artists, collectors, visitors and gallery owners.

The fair was held in a very special location: a building named “Bálna”, which translates to “whale”. With a shape reminiscent of the largest sea mammal, the striking, modern building on the banks of the Danube in Budapest combines the old and the new.

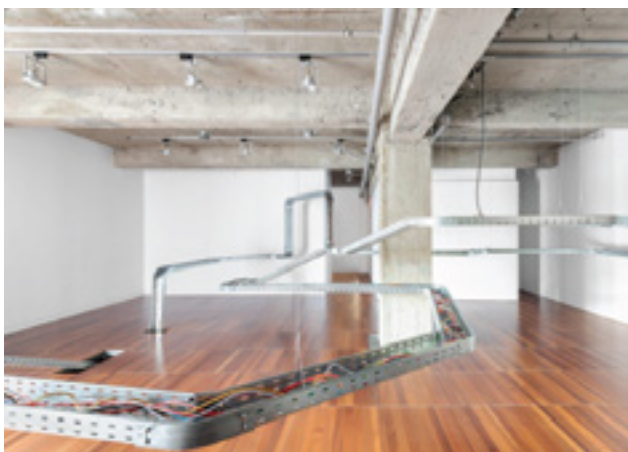
Originally, it belonged to the public bonded warehouses that were built in the 19th century. After renovations between 2009 and 2011, the building was transformed into a multi-functional centre, uniting gastronomy, culture, events, exhibitions and shops all under one roof.

On-site, the project was subject to a very strict schedule, and the conditions of the building had to be taken into consideration. The outstanding collaboration between all those involved made everything possible, and the entire art installation was a complete success.



# Art exhibitions around the world

## Grand entrance for RKS-Magic®



### New York artists rely on OBO Bettermann

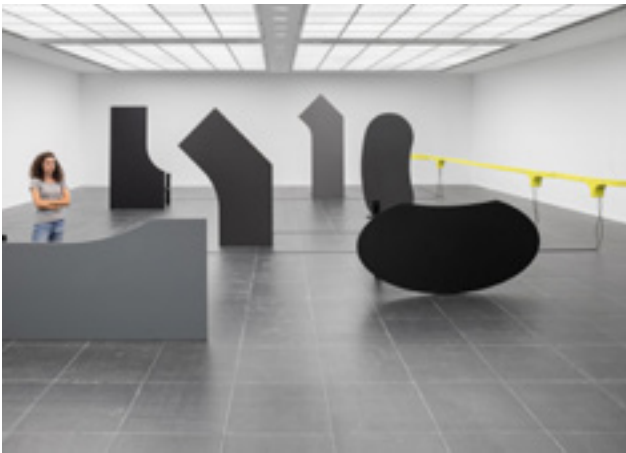
With their innovative connection, the RKS-Magic® cable trays are not only cleverly designed, but can also impress on account of their elegance and design. This also convinced Eva and Franco Mattes. Once again, they made the OBO cable trays into part of their “Fake Views” exhibition – this time in the Frankfurt Art Association. Before that, the exhibition, and thus also the RKS-Magic®, visited Los Angeles, Montreal, Milan and Zurich.

The “Personal Photographs” installation of the artistic duo consists of a network of cable trays, which winds through exhibition rooms and turns art into an experience. The cables, run along the RKS-Magic®, connecting two micro-computers, upon which images of different artists are dis-

played in a continuous loop. The installation reflects the influence of modern technology on our daily life.

### The artwork describes efficiency, stability and safety

The RKS-Magic® cable trays impressed the artistic duo with design and elegance. In addition, the Magic cable tray system from OBO stands for three basic aspects: efficiency, stability and safety. With their innovative plug connection, the cable trays can be connected simply and very quickly.



# Customer projects | Commercial & residential buildings

Whether residential buildings, hotels and restaurants, sports facilities and shopping centres or doctors' surgeries and hospitals, all buildings have one thing in common: electrical installations run through them like a network. Suitable measure must be taken to protect electrical devices and ensure the safety of the people in the building.

On the following pages, you will find a selection of projects which give you an impression of our comprehensive bandwidth of international customers from this segment.

- ATLAS GmbH, Dortmund, Germany
- Axel Springer, Berlin, Germany
- BVB Fanwelt, Dortmund, Germany
- Eclipse, Düsseldorf, Germany
- Enjoy Fitness Studio, Oviedo, Spain
- Wiska headquarters, Kaltenkirchen, Germany
- Hirschmann Automotive, Sânpaul, Romania
- JB-Motors GmbH, Stuhr, Germany
- Jorssen Noord BMW car dealership, Antwerp, Belgium
- Logistics Centre OBO Bettermann, Menden, Germany
- Providur's Palace, Zadar, Croatia
- Telekom Store, Hamburg, Germany
- UNI ELEKTRO, Mittenwalde, Germany
- Villa in der Natur, Stuttgart, Germany
- Vitesco Technologies, Iași, Romania





# ATLAS GmbH & Co. KG, Germany

relies on BlackLine from OBO Bettermann



**Dortmund  
Germany**

Building contractor: ATLAS GmbH & Co. KG  
OBO products: BlackLine, connection and routing systems, cable routing systems, installation systems, floor installation systems and underfloor applications, cable support systems

ATLAS GmbH & Co. KG is one of the leading manufacturers of safety footwear in Europe. If you look under the ceiling in the company's own showroom, you can see immediately the care with which the BlackLine – the system solution for black surface-mounted installations from OBO – was installed.

Events and lectures take place in this industrial-style space.

Right next door, the shop sells "Made in Dortmund" shoes as well as clothing. The high-quality work shoes are presented in a stylish industrial design. Matching this look are the black cable trays, which keep things tidy and ensure safety whilst also looking good.

They are therefore the comprehensive system solution for black surface-mounted installations. With OBO's black products, sophisticated electrical installations can be realised in modern architectural projects, such as at ATLAS.

But the OBO BlackLine not only offers a wide range of options to define a memorable and modern style, it also impresses in terms of recycling-friendly construction. With BlackLine, OBO presents a comprehensive system solution for black surface-mounted installations that make a design statement and set new standards in terms of functionality and sustainability.

The portfolio includes device installation and cable routing trunking, underfloor solutions and cable trays. In line with OBO's service philosophy, comprehensive support is provided throughout every phase of the project – from initial information to aftersales service.



# New Axel Springer building, Germany

Media transformation in the form of a building



**Berlin  
Germany**

|                       |  |
|-----------------------|--|
| Client:               | Axel Springer SE                                   |
| Architect:            | Rem Koolhaas, Office for Metropolitan Architecture |
| Electrical planner:   | Kofler Energies Ingenieurgesellschaft mbH, Berlin  |
| Installer:            | Schubert GmbH, Tangerhütte                         |
| Size of the building: | 52,000 m <sup>2</sup>                              |
| OBO products:         | Cable support systems, underfloor systems          |

### **Architecture shows the media transformation**

The square shape of the new Axel Springer building, which is flooded with light, is a symbol of cooperation and media change. It is in direct proximity to the surrounding tower blocks and Axel Springer Passage.

The official construction starting date of the new Axel Springer building was 6 October 2016 – exactly 50 years after the opening of the golden publishing building.

Over 10,000 square metres, the publishing building of Axel Springer SE offers space for up to 3,500 employees.

Spread across 13 storeys and a total of 52,000 square metres, the building houses editorial facilities, central areas and digital companies.

The unusual architecture of this special building embodies the future of work and stands for the digital transformation of Axel Springer.

The new Axel Springer building was designed by the Dutch architects Rem Koolhaas, who won a competition against 17 architectural offices.

Linked terraces in the interior, many glass areas and a 45 metre-high atrium are the hallmarks of the building, which opens out toward to the existing publishing buildings and the city.

The cable support systems for the electrical and data infrastructure of the building come from OBO Bettermann. OBO is proud to have been allowed to be a part of this futuristic project.

### **Clever connections save time**

Cable support systems of the Magic range were used, as they could be arranged without tools and without screw connections. That saves time and energy.

Round GES R2 floor sockets from the underfloor systems sector were used throughout.

Cable trays with a black surface were required for the TV studios, so that they could fit in perfectly with the visual environment. For this, the cable trays were powder-coated at the factory.

Special solutions were created for routing systems for the maintenance of electrical function. Due to the size of the building, many of the cables for the maintenance of electrical function had to be run into the upper storeys at the rising points. A special survey was required for a three-layer rising section for the safety power supply.

### **All the challenges met through cooperation**

Special challenges for the routing of the cable sections were produced by the amount of technology in the area of the storey ceilings. Here, effective coordination with other units and some special solutions were necessary. In some areas, as the insertion depth for the anchors was limited to 40 mm, special knock-in ties were used.

OBO was able to shine through its competence and reliability from the planning stage through to the implementation of the project. This meant that, once again, successful cooperation with all those involved in the project was notable. Besides the special dimensions of the structure, further challenges with this project were found in the 3D planning and logistical requirements. Tight time periods for delivery required precise management for deadline planning and material supplies. This was achieved through the efficient agreement between the project manager and the construction management of the electrical installation company.

# BVB Fanwelt, Germany

OBO BlackLine in the BVB Fanwelt building – making a great team



 **Dortmund  
Germany**

|                       |   |
|-----------------------|---|
| Builder:              | BVB Merchandising GmbH                          |
| Architects:           | caspar.schmitzmorkramer GmbH                    |
| Size of the building: | 2,000 m <sup>2</sup>                            |
| OBO products:         | Cable support systems,<br>BlackLine cable trays |

In the BVB Fanwelt building in Dortmund, the many offers and services for the fans of the black and yellow club – including merchandising, services and a café – are united on more than 2,000 square metres.

Another highlight is the so-called “flocking” or name-printing station where fans are able to have their own kit printed.

The BVB Fanwelt building, as a central place to go for all Borussia Dortmund fans, has a direct link to the stadium and the B1 road. Through a glass façade you can see into the black and yellow “fan world” and the six-metre-high BVB logo and the Borussia Dortmund lettering can already be seen from far away. The building reflects transparency, proximity and accessibility – important values for both BVB and for the region.

#### **Why did the client decide to use OBO products?**

On the inside of the BVB Fanwelt building, wood meets construction elements such as steel and supply pipes. This gives it an industrial character that matches Dortmund and the OBO BlackLine products. With the system solutions for black surface-mounted installations, sophisticated electrical installations can be achieved in modern architecture projects. The portfolio comprises, among other things, cable routing and device installation trunking, underfloor solutions and cable trays. In the BVB Fanwelt building, black cable trays, suspended supports and the matching fittings were installed to be clearly visible in the indoor spaces where they fit into the industrial style of the interior seamlessly.



#### **Sebastian Mischke, head of BVB Fanwelt:**

“In the Fanwelt building, fans can find everything related to BVB under one roof. We also want to create a sense of closeness – to the fans and to Dortmund. The OBO BlackLine fits perfectly into this concept – it has not only impressed us with its quality, but also emphasises the industrial character that Dortmund stands for. It also reflects one of our club colours.”





Eclipse  
Düsseldorf





# Eclipse office building, Germany

OBO BlackLine is a convincing solution in the Eclipse vertical office campus



 **Düsseldorf  
Germany**

|                       |  |
|-----------------------|--|
| Client:               | die developer                                |
| Architects:           | HPP Architects in collaboration with         |
| Size of the building: | 30,000m <sup>2</sup> , 16 storeys            |
| OBO products:         | Cable routing systems, cable support systems |



The Eclipse office tower in Düsseldorf was completed in 2022. The 16-storey building, designed by HPP Architects in collaboration with UNStudio on behalf of the company “die developer”, rises up into the sky with its striking glass façade directly on Kennedydamm. Eclipse offers 30,000 square metres of gross floor space and a modern office landscape with around 1,200 workplaces.

Due to the location of Eclipse, surrounded by two intersecting federal roads with high noise levels in the outdoor area, the common areas for the users of the Eclipse offices are located mainly inside the building. The centrepieces are the atria and light wells, which are located on several floors and, in some cases, extend over three floors. In these atria, employees will find a wide range of recreational areas, such as a cafeteria and an event hall, which can be seen clearly through the glass of the façade also from the outside. Where the flat window surfaces can be seen through the glass façade, the atria connect to form a “vertical campus” that extends to the roof terrace with a sweeping view over the city. “The Eclipse acts as a communicator and creates an urban connection between the neighbourhood and the world of work,” says Werner Sübai, Senior Partner at HPP Architects. Sustainability also played a major role in the construction of the building.

#### **Why did the customer choose OBO products?**

In this project, the OBO BlackLine products impressed with their versatility and elegance. BlackLine is OBO’s system solution for black surface-mounted installations. It not only offers a wide range of options for defining an appealing and modern style, but also scores points in terms of sustainability and environmental compatibility. This is because all OBO BlackLine components simplify dismantling and enable efficient recycling, therefore meeting the concept of circular construction. The portfolio includes device installation and cable trunking, underfloor solutions and cable trays. BlackLine products have been installed on several levels in the Eclipse building and now fit seamlessly into the overall concept.



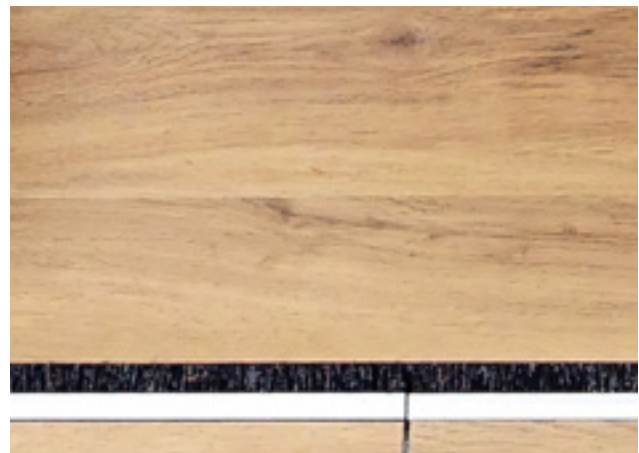
# Enjoy Fitness Studio, Spain

OKB system seamlessly provides treadmills with power and data



Oviedo  
Spain

Size of the building: 5,792 m<sup>2</sup>  
OBO products: Underfloor systems



### **A special fitness studio for amazing challenges**

The Enjoy Fitness Studio in Oviedo, Spain, is the city's largest sports and leisure complex. The modern and sustainable building is equipped with innovative high-tech equipment. Its total area of 5,792 square metres extends over two floors and offers space for 7,000 members. Sports enthusiasts can enjoy a 1,000-square-metre fitness room with more than 200 pieces of sports equipment, a heated swimming pool and a hydrothermal zone with sauna, hydromassage and a Turkish bath. A café with healthy meals and a car park with spaces for cars and motorcycles are also a part of the centre.

### **Brush bar trunking system provides flexibility**

OBO supplied its OKB brush bar trunking system for the Enjoy Fitness Studio. The OKB system was selected as it is the ideal solution to supply the treadmills with power and data. The treadmills are equipped with screens so that members can watch TV or use mobile apps during their workout. The OKB system made this possible as it blends into the room completely.

Only a narrow, inconspicuous brush bar along the wall and in front of the floor-to-ceiling windows hints at how the room is supplied with power. As the bar is continuous, cables can be run out at any point and thus always have the shortest route to the destination. The trunking is mounted flush with the screed and the covers can be covered directly by the floor covering. This means that they fit discreetly and seamlessly into any interior.

# WISKA headquarters, Germany

Cable support and underfloor systems supply new building with power and data



**Kaltenkirchen  
Germany**

|                       |  |
|-----------------------|--|
| Client:               | WISKA Hoppmann GmbH  |
| Architects:           | Günther Bergmann   |
| Electrical planners:  | Ing. Büro Viet Breckwoldt<br>System operation<br>technology,<br>MyLeanFactory GmbH |
| Installers:           | Elektro Lembcke  |
| Size of the building: | 36,500 m <sup>2</sup>  |
| OBO products:         | Cable support systems<br>and underfloor systems                                    |



### **New company headquarters at WISKA**

WISKA, based in Kaltenkirchen near Hamburg, manufactures innovative products that are used around the globe. When the time came to build their new company headquarters, WISKA opted for OBO solutions in the areas of under-floor and cable support systems.

The new WISKA headquarters include logistics and production areas, office space and quality assurance space over a total area of 36,500 square metres. The first parts of the logistics and production facilities were put into operation at the end of 2020. The plant has been completely operational since the middle of 2021.

The new building features a significantly higher degree of automation and digitalisation in both logistics and production.

The decisive factor was the possibility of flexible supply of power and data to workstations in the open-plan office via OBO's trunking systems, installed flush with the floor. Thanks to the latchable trunking covers installed in the trunking, the floor tanks can be moved along the length of the trunking and therefore be flexibly adapted to future changes in room use. Underfloor solutions, such as the GES9 service outlet,

form the interface in the floor for direct workplace cabling. The OBO products in the cable support systems area also impressed the customer. These were installed in the production and logistics buildings of the new WISKA headquarters.

### **Why OBO Bettermann was chosen**

The entire supply to the machinery as well as the granulate supply required a self-supporting steel construction standing on the ground. OBO excels here, in particular, with the extended service of a static calculation of self-supporting constructions for piping and cable support systems in the production area of the central granulate supply, and all other media required at the machine, such as power, compressed air, networking and cooling circuits.

A particular challenge in this project was the planning and construction of the production facilities and logistics area.

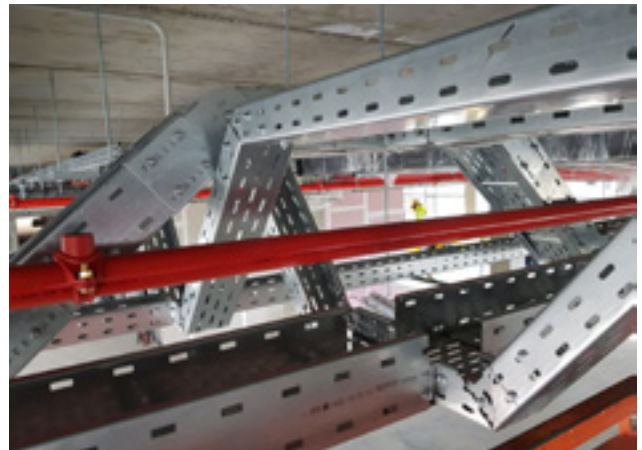
# Hirschmann Automotive, Romania

OBO guarantees a reliable supply of power and data



**Sânpaul  
Romania**

|                       |  |
|-----------------------|--|
| Client:               | Hirschmann Automotive SRL  |
| Installer:            | KESZ ELECTRIC S.R.L  |
| Size of the building: | 36,500 m <sup>2</sup>  |
| OBO products:         | Connection systems,<br>fire protection systems,<br>cable support systems |



### **Significant expansion of the location with OBO products**

Hirschmann Automotive SRL is a subsidiary of Hirschmann Automotive GmbH, which has its headquarters in Austria. For more than 60 years, the group of companies has worked on the further development of the automotive industry and stands for motion and safety on the road.

The expansion of the Hirschmann location in Sânpaul has seen the creation of 300 new jobs and the company was able to increase its cable harness production significantly.

The new building has a total area of 9,100 square metres. Some 40% of that is given over to production, whilst the remaining 60% is used for warehousing. Here too, the com-

pany has invested in the automation of the logistics warehouse, whose storage capacity was expanded from 34,000 boxes to 45,000 boxes.

### **Quality and reliability are our benchmarks**

A wide range of OBO products was used in the construction of the new production location. Of decisive importance for this was the excellent, reliable quality of the OBO products. This means that both cable support systems and transient and lightning protection systems can be found here, as can connection and fastening systems.



JB-Motors GmbH  
Stuhr



# JB-Motors GmbH, Germany

Luxury car dealership relies on the reliability of OBO Bettermann products



 **Stuhr  
Germany**

|                       |   |
|-----------------------|---|
| Size of the building: | 900 m <sup>2</sup>  |
| Installer:            | Hoge from Wildeshausen  |
| OBO products:         | OKB brush bar trunking,<br>EÜK system with<br>cassettes, UDHOME |



Just outside Bremen, in tranquil Stuhr, an exclusive showroom for luxury cars has been built for the company JB-Motors GmbH.

In just around six months, on an area of 2,500 square metres, owner Jerome Böker has created a luxury car dealership. This showroom offers space for 25 vehicles from Porsche, Ferrari, Lamborghini, Mercedes and Bentley.

JB-Motors is known for its outstanding exclusivity, which is now also reflected in the approximately €3 million euro building, providing a fitting setting for luxury cars.

The most beautiful cars far and wide are now on display here in a space covering around 900 square metres.

The built-in screed-covered EÜK duct system from OBO Bettermann is the ideal underfloor solution for large areas with fixed furniture plans, just like here at JB-Motors.

It ensures a high degree of flexibility in the power supply from the floor area. The electrical installation ducts form a grid hidden in the screed for cable routing.

Underfloor boxes enable access to the electrical installation and the expansion with device installation units.

The UDHOME2, the square floor socket for use in dry-cleaned raised floors and screed floors in indoor areas, is mounted directly on the raw concrete and connected with flexible installation pipes.

In addition, the OKB brush bar trunking from OBO Bettermann also integrates elegantly into the appearance of the room.

# Jorssen Noord BMW, Belgium

Car dealership is thrilled with the GES R2 floor socket



 **Antwerp  
Belgium**

|                       |  |
|-----------------------|--|
| Client:               | BMW Jorssen                                  |
| Architects:           | Architeam                                    |
| Electrical planners:  | Maris Technics                               |
| Size of the building: | 10,000 m <sup>2</sup>                        |
| OBO products:         | Cable support systems,<br>underfloor systems |



### **Elegant power supply at every level**

OBO supplied floor sockets and cable trays for the Jorssen Noord BMW dealer in Antwerp, Belgium. The dealership covers a total of 10,000 square metres, spread across exhibition rooms, workshop and underground car park. The OBO products were installed in the whole building complex and can be found in all areas.

OBO was particularly able to stand out through the design of the GES R2 floor socket. The GES R2 has been in use around the world for decades. No surprise with the wide range of unbeatable product properties, as it is ideally suited to wet-cleaned floors and can resist the highest loads. The round floor sockets of the GES R2 series supply data and power exactly where they are required.

This means that they are an ideal underfloor solution when a discreet appearance, a high load capacity and varied functionality are required. The floor tanks stand out through their fine design and also add value to high-quality flooring areas. This means that they are ideal for a high-quality car dealership.

### **Special solutions with white paint**

A further plus point: OBO was able to provide cable trays in a special, white paint finish. These are not a standard product, but a special solution that OBO created especially for BMW Jorssen.

# Logistics Centre, Germany

OBO Bettermann builds new Logistics Centre with state-of-the-art technology



 **Menden  
Germany**

|                       |   |
|-----------------------|---|
| Client:               | Property management<br>Bettermann GmbH & Co. KG<br>(OBO Bettermann)   |
| General contractor:   | GOLDBECK West GmbH,<br>Dortmund   |
| Electrical planner:   | Dipl.-Ing. Werner Schauerte<br>GmbH & Co. KG  |
| Installer:            | Busche Elektrotechnik GmbH,<br>Balve  |
| Size of the building: | 23,500 m <sup>2</sup> storage area,<br>hall length: 176 m,<br>hall width: 133 m,<br>height: 13 m  |
| OBO products:         | Cable support systems,<br>connection and routing<br>systems, cable routing<br>systems, device installation<br>ducts and poles, installation<br>systems, surge protection,<br>external lightning protection,<br>fire protection systems,<br>photovoltaics (2026) |



On an area the size of four football fields, the new OBO Logistics Centre was built in record time of just six months. As the company continues to grow, an expansion of the logistics area and the Metal Competence Centre had been planned for some time. The new Logistics Centre with attached production facility features state-of-the-art technology.

The Logistics Centre comprises a storage area of around 23,000 square metres as well as an office and administration wing. This expansion will ensure delivery capabilities and goods handling for both the national and the OBO Group's international locations in the long term. The additional logistics and storage space will enable the fastest-possible service to national and international markets. The various

halls are equipped with a range of state-of-the-art storage systems. Large loading ramps on the entire north-east side and in the area of the south-east side ensure optimal loading processes.

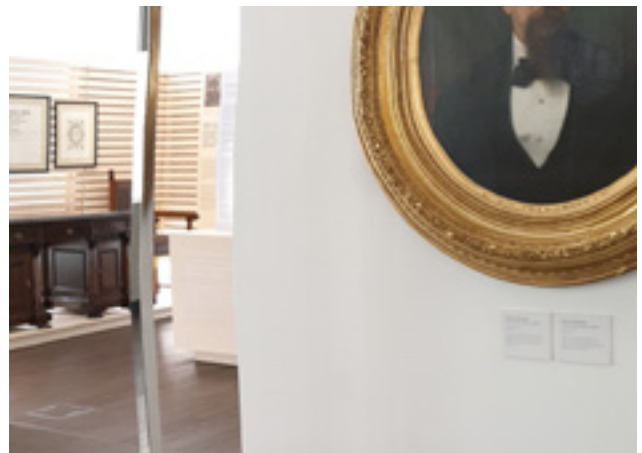
The large roof area of the new building complex is used optimally and sustainably, as the company's own photovoltaic system has been expanded. For the installation of the PV modules, the OBO Magic PV solution was used, of course. These innovative systems enable quick and easy installation of all standard PV module sizes.

# Providur's Palace, Croatia

OBO products are part of the restoration



|                      |  |
|----------------------|--|
| Client:              | City of Rijeka,<br>national government   |
| Architects:          | Architectural project<br>– Croatian Conservation<br>Institute                                  |
| Electrical planners: | Interkonzalting, Zagreb  |
| OBO products:        | Underfloor systems, cable<br>support systems, fire<br>protection systems,<br>fastening systems |



### A building with many options

Together with the Rector's Palace, the Providur's Palace is part of the "Two Palace Museum" in Zadar. Besides a large entrance and information hall, there are also teaching rooms, reading rooms, a cafeteria, a souvenir shop and the exhibition spaces themselves. Multipurpose halls, offices and free spaces for workshops or the preparation of exhibitions are also a part of the complex.

The monumental building of the Providur's Palace dominates the eastern part of the historic core of Zadar. Over the years, the palace has played home to the institutions of the civic administration. Together with the neighbouring Rector's Palace, it is one of the only buildings in Zadar that was not destroyed in the Second World War. However, it has lost its architectural significance. The oldest part of the palace was built as early as 1607. Due to its extraordinary cultural and historical significance, the palace was added to the register of immovable cultural monuments of the Republic of Croatia in 1978. The Providur's Palace was refurbished and restored as part of this project. The aim is to improve it in such a way that it can fulfil its status as an immovable cultural treasure. Thus, the basic requirements of the city of Zadar and the

local inhabitants for exhibition areas and additional museum facilities can be covered. In total, 2,910 square metres of space in the Providur's Palace were refurbished and renovated.

### Good cooperation provides solutions

During the restoration of the palace, a wide range of different OBO products were used in the entire building complex. Of significance here was the good cooperation with the electrical planner and the construction company. Here, amongst other things, the RKS-Magic® cable tray, UDHOME floor sockets and Grip collection clamps were used.

In this project, a special challenge was in the reconstruction of the wooden intermediate ceiling structures, in which, on the one side, cable trays were to be installed on the ceiling and, on the other side, floor sockets were to be installed in the floor.



# Telekom flagship store Hamburg





# Telekom flagship store, Germany

Function meets design meets sustainability



**Hamburg  
Germany**

|                       |                                 |
|-----------------------|---------------------------------|
| Architect:            | LEPEL & LEPEL                   |
| Size of the building: | 835 m <sup>2</sup>              |
| Photographer:         | HGEsch Photography              |
| OBO products:         | BlackLine cable support systems |



The retail design rolled out across Germany for Telekom was once again designed by the interior design and planning team at the Cologne LEPEL & LEPEL office in an unprecedented way for the store in Hamburg: Here, customers are turned into fans and a whole new concept is being introduced into bricks-and-mortar retail.

The sustainable flagship store, located in the centre of Hamburg, invites its customers to linger and inspires them with selected materials and a design that reflects the Hanseatic city. The project is called "Waterkant" (waters' edge), with the container walls matching the theme too.

The largest shop in Europe covers 875 square metres and conceptually addresses the theme of water.

The "clear shell" designed by LEPEL & LEPEL as a constant element of the Telekom retail design frames the entire interior with black ceilings and walls and makes the magenta brand world shine. The highlight is undoubtedly the magenta-coloured staircase that connects the two floors.

With its new shop design, Telekom is consciously focusing on sustainability and environmental awareness. The company uses sustainable raw materials, recycled furniture

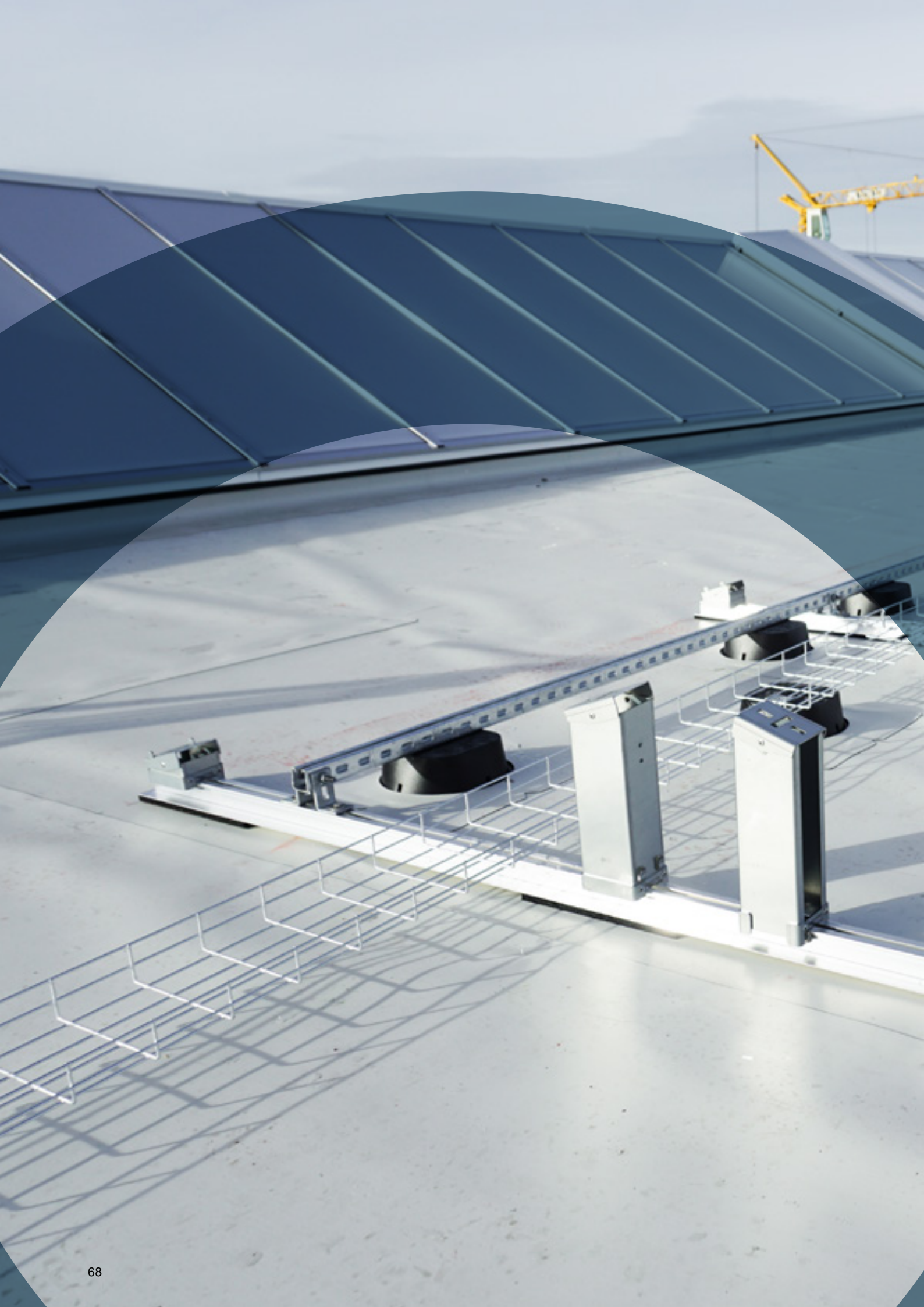
and furniture made by local manufacturers. A generous green ceiling supports the indoor climate.

Cable trays from OBO ensure that cables are routed safely under the ceiling. In this stylish environment, the OBO BlackLine products offer a perfect symbiosis of design and function.

The straightforward installation ensures smooth cooperation between the trades and ensures rapid implementation of the project.

The portfolio also impresses in terms of sustainability and environmental compatibility. This is because all OBO BlackLine products are flexible in their use, durable and feature high-quality materials and surfaces. In the event of a building conversion, they are ideal in terms of being dismantled and reinstalled for subsequent use.

Recyclable products such as OBO BlackLine are making an important contribution to greater sustainability in the construction industry. For this reason, the black cable trays could not have been put to better use in this project.





UNI ELEKTRO  
Mittenwalde

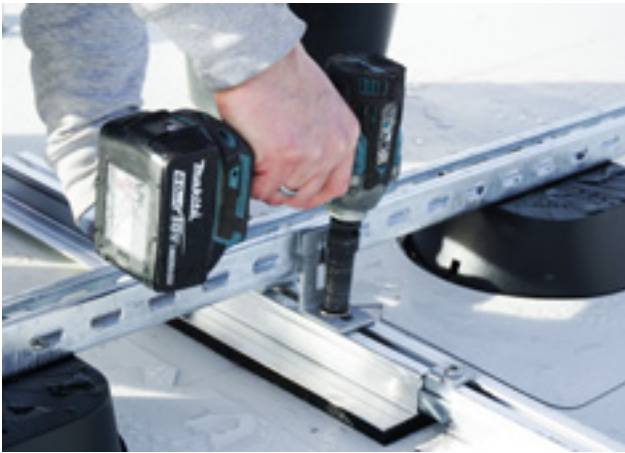
# Uni Elektro, Germany

PV system: Custom solution without ballasting



 **Mittenwalde  
Germany**

|                       |   |
|-----------------------|---|
| Contractor:           | EGH Uni Elektro Eschborn  |
| Architect:            | Bläß Ingenieur  |
| Installer:            | 1komma5 Potsdam GmbH  |
| Electrical planner:   | BNVB Ingenieure   |
| Size of the building: | 7,300 m <sup>2</sup>  |
| OBO products:         | PV mounting systems for flat roofs, Magic PV Flat Basic, Magic PV Flat Glue, mesh cable trays, cable ladders, fire protection ducts |



At the central warehouse of electrical wholesaler Uni Elektro in Mittenwalde, the roof covering needed to be replaced, and a new PV system was also to be installed. The lightweight construction of the roof proved to be a particular challenge, as it did not allow for a standard ballasted PV substructure. It consisted of a lightweight trapezoidal sheet metal roof and roof insulation with a FPO roof cover with static restrictions.

A solution was needed. At the Intersolar trade fair in Munich, Uni Elektro was impressed by the UniBase Glue solution from the OBO portfolio. It was just right for this project! Based on UniBase Glue, OBO developed and implemented a special solution for the Uni Elektro central warehouse: a ballast-free hybrid system consisting of Magic PV Flat Basis combined with UniBase Glue, which was bonded to the roof covering without penetrating the roof. The static calculation for the special solution was also carried out by OBO.

The following solutions from the OBO portfolio were used in this special project:

- **Magic PV Flat Basic** as a custom ballast-free solution with UniBase Glue bonding
- **Mesh cable tray** with UniBase Glue roof bonding
- **Rising ladder** on the façade
- **PLMR fire protection duct** as a firewall crossing on the roof

As an additional OBO service, we provided on-site construction support for the implementation of the special solution. OBO experts were on hand at all times to provide advice and assistance.



# Villa in der Natur Stuttgart





# Villa in der Natur, Germany

A villa that could not be more closely integrated with nature



**Stuttgart  
Germany**

|                      |  |
|----------------------|--|
| Architect:           | Rebholz Architects and Engineers                                   |
| Construction period: | 3 years  |
| Photos:              | Daniel Gerteiser   |
| Construction method: | Solid concrete construction, full thermal insulation, curtain wall |
| OBO products:        | Floor installation systems and underfloor applications             |

It is the special construction of this extraordinary building that amazes its visitors. A villa that couldn't be closer to, and more in tune with, nature.

Various cube shapes appear to be stacked on top of one another, with the elongated ground floor forming the base and wide loggia above offering a seemingly boundless view of the landscape and surrounding nature.

The sense of lightness of the building is enhanced by the many large glass fronts on the ground floor, whilst the matching grey exposed concrete ensures a harmonious connection between the inside and the outside.

Focusing your gaze on the interior, it quickly becomes clear that the seamless flooring made of polished poured asphalt can be found in all rooms, linking all areas of the house into one harmonious whole.

The height-adjustable stainless steel cassettes from OBO Bettermann fit seamlessly into the flooring and provide a flexible power supply to all areas of the house, exactly where it is needed.

The stylish, modern furnishings reflect a taste for the extraordinary. OBO Bettermann is delighted to have equipped this special residence.



# Vitesco Technologies, Romania

Test centre for electrification products in the automotive industry



Iași  
Romania

|               |   |
|---------------|---|
| Client:       | DRB Consulting  |
| Installer:    | S.R.L. TIAB, Piatra Neamt   |
| OBO products: | Connection systems, fire protection systems, cable support systems, cable routing systems |



### **OBO quality now also in a Romanian test centre**

Vitesco Technologies is a leading international supplier and manufacturer of drive technologies for sustainable mobility. In the Romanian city of Iași, Vitesco has opened a new, 2,300-square-metre test centre for electrification products in the automotive industry. A total of 3.5 MW of power allow the function testing and validation of Vitesco products.

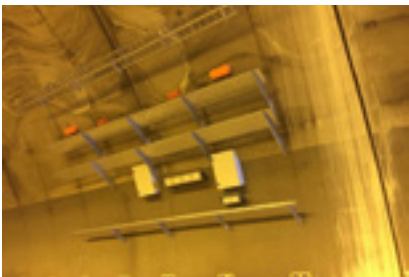
Here, high- and low-voltage inverters, as well as DC-DC converters are tested, amongst other things. The test centre in Iași supplements the existing facilities in Berlin, Regensburg and Nuremberg.

Vitesco is a major customer of OBO Romania and therefore once again looked to OBO products in this project. In the new test centre, cable routing systems, connection and fastening systems, cable support systems and transient and lightning protection systems are installed.

# Customer projects | Tunnels & bridges

Frequently, OBO products are selected due to the professional responses to technical questions, as well as the fulfilment of all the technical requirements. This also applies to the construction and restoration of tunnel and bridges.

- Maastunnel, Rotterdam, Netherlands
- Annie Cordy Tunnel, Antwerp, Belgium
- Hong Kong-Zhuhai-Macau Bridge, Hong Kong, China
- Montemor Tunnel, Lisbon, Portugal
- Livan Infrastructure Project, Antwerp, Belgium



# Maastunnel in Rotterdam, Netherlands

Restoration of the oldest tunnel in the Netherlands



Rotterdam  
Netherlands

OBO products:

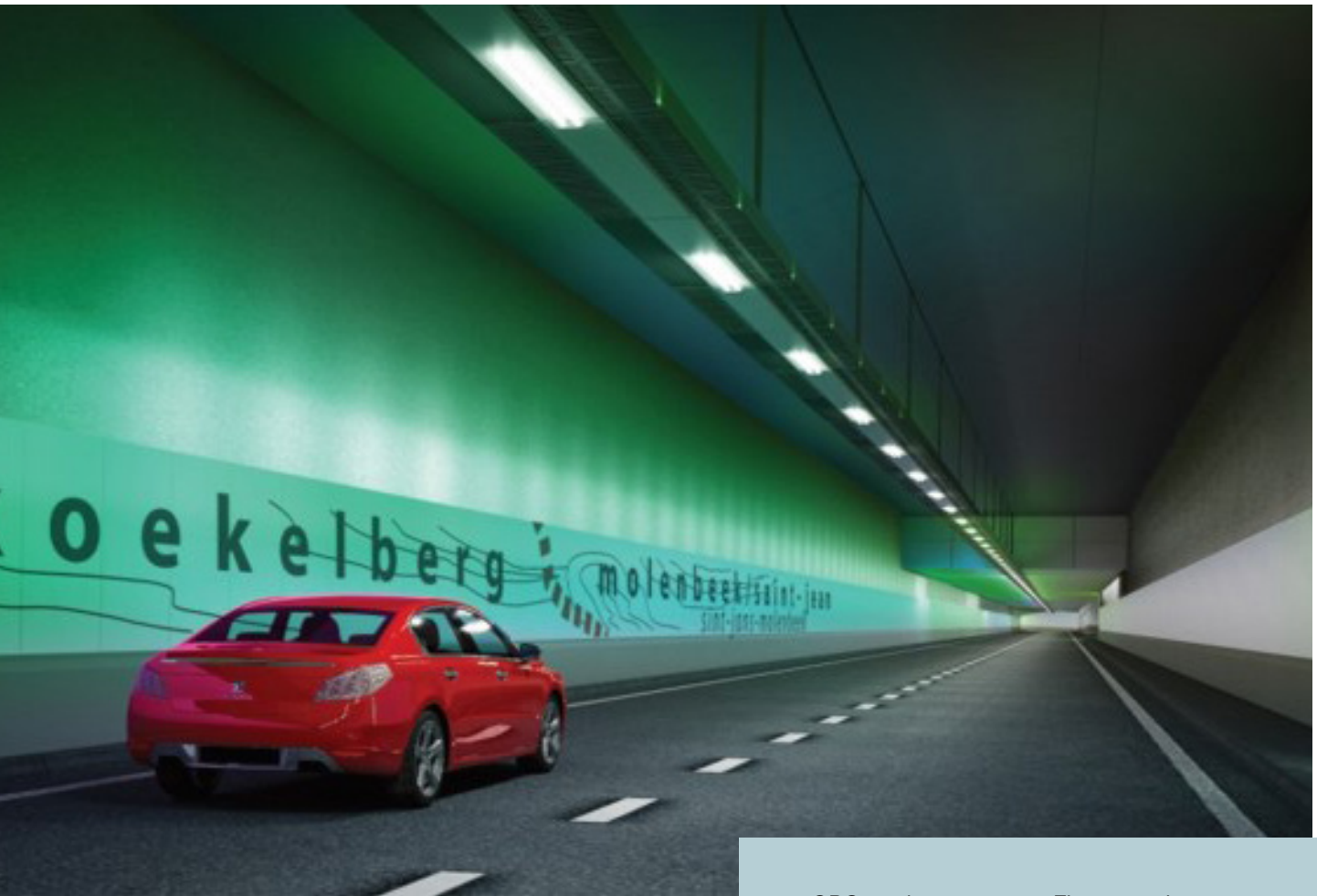
Cable support systems,  
fire protection systems,  
underfloor systems

## Custom solution from OBO for the maintenance of electrical function

During the restoration of the oldest road tunnel in the Netherlands, the maintenance of electrical function in the event of fire was at the focus of requirements. As a fire protection expert, OBO was happy to rise to this challenge. With countless products certified for the maintenance of electrical function, we were able to ensure that the project specifications could be implemented safely.

# Annie Cordy Tunnel, Belgium

OBO is a part of the renovation of Belgium's longest road tunnel



**Brussels  
Belgium**

|               |   |
|---------------|---|
| OBO products: | Fire protection systems,<br>cable support systems |
| Architect:    | Art & Build                                       |
| Installer:    | Circul 2020                                       |

## OBO products guarantee stability

OBO supplied cable trays and fastening systems for the renovation of Belgium's longest road tunnel. The Annie Cordy Tunnel, previously known as the Leopold II Tunnel, has a total length of 2.5 kilometres and is used by 65,000 vehicles every day. The tunnel was built in 1986 and connects the basilica in Koekelberg with the Inner Ring Road.

OBO was chosen for this project, as we can supply products which have a lifespan of up to 25 years. This could be achieved through a special FTSO galvanisation process and a plastic coating. For the renovation of the tunnel, OBO supplied both MKS-Magic® cable trays, as well as fastening material, such as Grip collection clamps, fastening rails, US 5 supports and US 7 supports, as well as AW30 and AW5 wall and support brackets.

# Hong Kong-Zhuhai-Macau Bridge, China

The longest sea bridge in the world – OBO provides safety



**Hong Kong  
China**

OBO products:

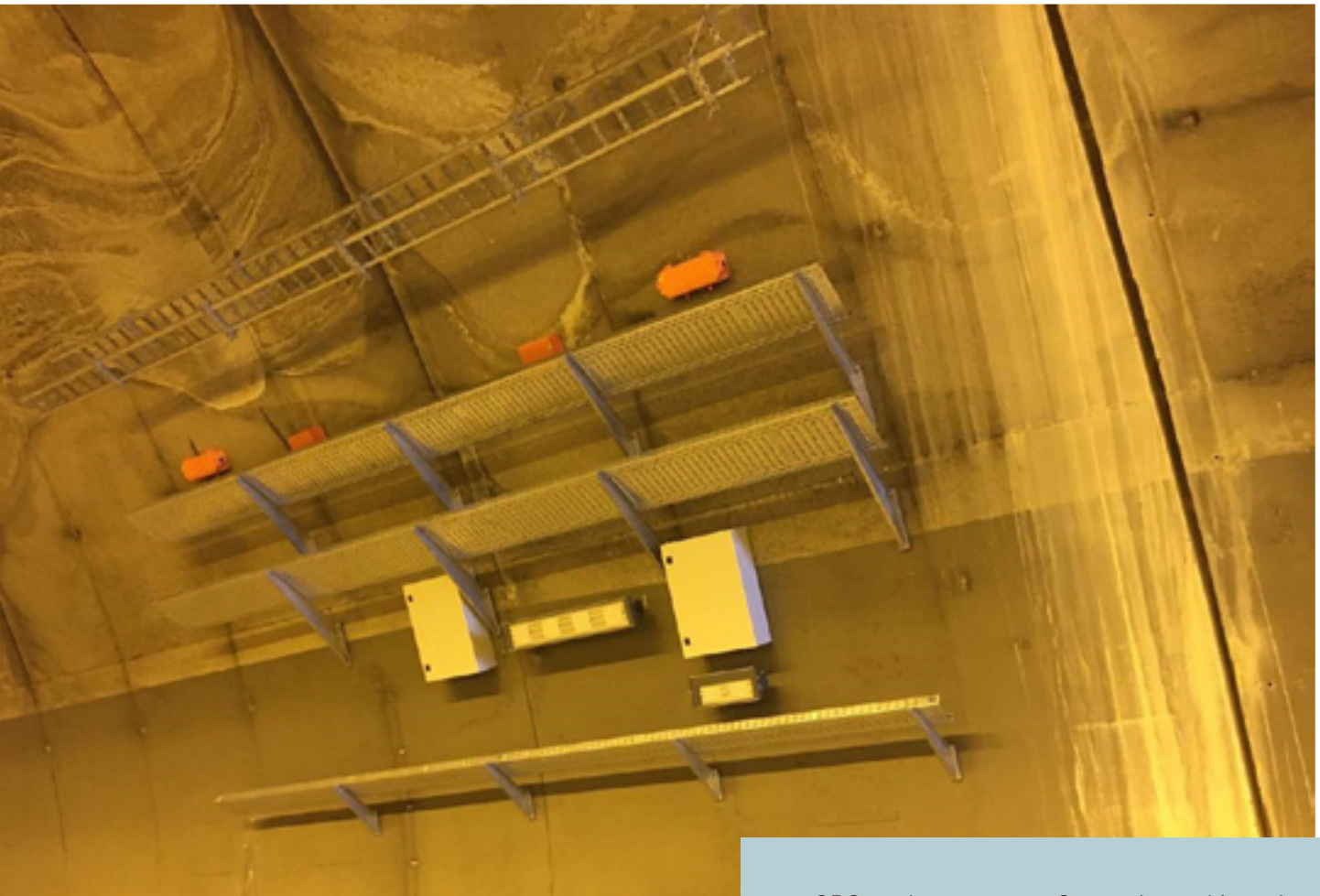
Connection and fastening systems, transient and lightning protection systems, cable support systems

The Hong Kong-Zhuhai-Macau Bridge connects the western side of Hong Kong with Macau and the city of Zhuhai in Guangdong province, which is located west of the Pearl River Delta.

The 50-kilometre-long connection has become a landmark of the region. A gigantic project that was completed in record time.

# Montemor Tunnel, Portugal

## Restoration of the Montemor Tunnel in Portugal



OBO products:

Connection and fastening systems, transient and lightning protection systems, cable support systems

### Restoration of the Montemor Tunnel in Portugal

OBO products are a part of the restoration project of the Montemor Tunnel in Portugal. For this, special solutions from the areas of Industrial installations and Safety and protection installations were used. The 650-metre-long Montemor Tunnel has been in use since 1995 and, for some time, had not met various requirements.

### Why OBO?

For the restoration, OBO products were selected due to the professional responses to technical questions, as well as the fulfilment of all the technical requirements.

After the restoration and the installation of the OBO products, the Montemor Tunnel was adapted to the directives of the European Parliament and the European Council. The directive describes the minimum safety requirements for tunnels in the trans-European road network.

# Livan Infrastructure Project, Belgium

OBO stands out through solution competence in tunnel construction



OBO products:

Connection and fastening systems, cable support systems

## OBO stands out through solution competence in tunnel construction

“Livan I” is part of a project for the optimisation of mobility and infrastructure in Antwerp, Belgium. In the context of the project, a series of tram tunnels is being commissioned, after they stood unused for 30 years. The aim is an expansion of public transport in the eastern part of Antwerp.

Livan is a tram connection with a total length of six kilometres, of which three kilometres are in tunnels. The tunnel contains three layers of hot-dip galvanised and also plastic-coated cable ladders, mounted on a curved MS 41 mounting rail from OBO.

## Tailor-made solutions for tunnel construction

In this project, OBO was able to shine through its competence and tailor-made solutions for tunnel construction. OBO systems for tunnel construction create safety, function reliably in case of fault and guarantee a reliable power supply, provide fault-free data transmission and fulfil all the requirements of modern fire protection. The OBO connection and fastening systems make it possible to fasten the cable trays and cable ladders to the tunnel walls.

In the “Livan I” project, the curves of the tunnel presented a major challenge. However, an ideal solution was found with the curved MS 41 mounting rails, in order to fasten cable trays and cable ladders in the curves. OBO employees were reliably available to the customer during every project step to offer advice.

**OBO Bettermann Holding GmbH & Co. KG**

P.O. Box 1120  
58694 Menden  
GERMANY

**Customer Service**

Tel.:+49 (0) 2373 89-1700  
export@obo.de

[www.obo-bettermann.com](http://www.obo-bettermann.com)

© OBO Bettermann Order No. 9140092 02/2026 EN